

KDS-10 DELI SLICER

PRO-CUT[®]

SPEC SHEET

www.pro-cut.us

STANDARD FEATURES

- Powerful 1/3 HP motor for slicing all types of cold cuts
- Long lasting 10" Italian chromium steel blade
- Features a built in sharpener
- Compact footprint for limited spaces
- Robust belt driven transmission
- Stainless steel affixed safety ring guard
- True 45 degree angle gravity feed
- 430 RPM
- 8.8" x 7.6" Product tray
- Adjustable slice size



PRODUCT HIGHLIGHTS



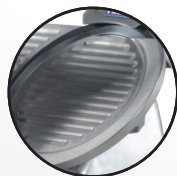
**Powerful
1/3 HP motor**



**Built in
Sharpener**



**Adjustable
slice size**



**Affixed safety
ring guard**



**True 45 degree
angle gravity feed**



**8.8" x 7.6"
product tray**



Intertek



Intertek



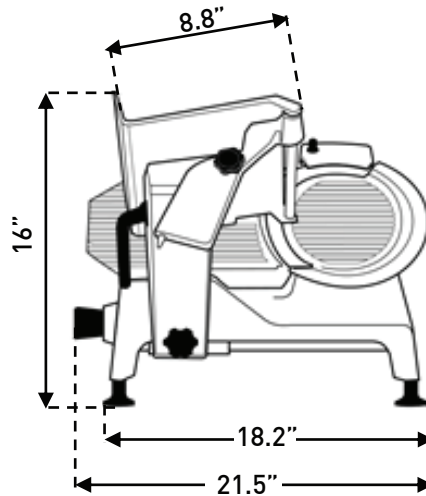
1 year parts and labor

SPEC SHEET

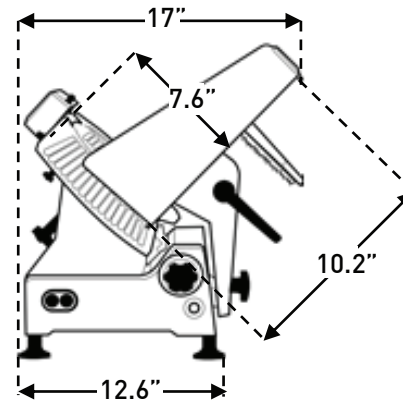
www.pro-cut.us

PLAN VIEW

Front view



Side view



NEMA 5-15P

TECHNICAL DATA

Dimensions

External dimensions	L: 17" W: 21.5" H: 16"
Net weight	50.71 lb (25 kg)
Power cord Length	5.9 ft

Construction

Gage plate / Knife guard	Stainless steel
Blade	Chromium steel
Body	Aluminum

Logistic

Max number of SKU per pallet	6
Shipping dimensions per unit	L: 29" W: 22.2" H: 19"
Shipping weight per unit	51 lb
Shipping dimensions full pallet	L: 36" W: 51" H: 63"
Shipping weight full pallet	350 lb
Freight class	85

L: Length W: Width H: Height

Electrical

Motor	1/3 HP
Volts / Frequency	127 Vac / 60 Hz
Amps	3
Watts	250
Phase	1 ph
Plug type (NEMA)	5-15P

Performance data

Transmission	Belt
Blade diameter	9.84" (250 mm)
Speed blade	430 RPM
Max. cut width	0- 0.47" (0-1.2 cm)
Max. sliding table travel	10" (25.5 cm)

Dealers information
